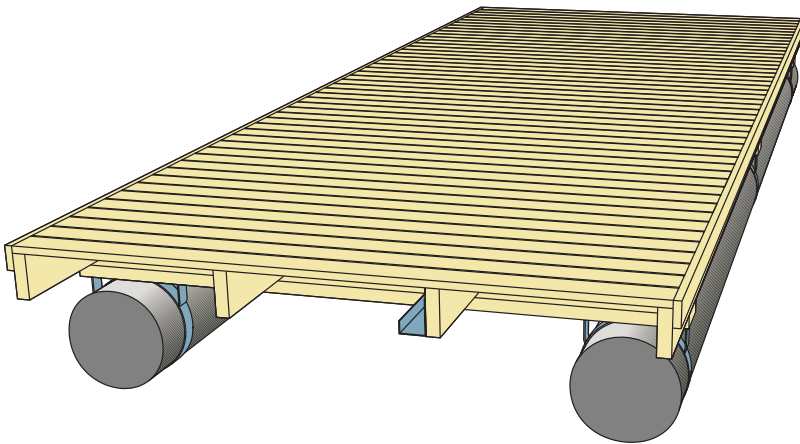


System pontoons 2400, 2400H

The **System 2400 and 2400H** are plastic tube timber pontoons designed for use as both mooring of small boats and as for general purpose in sheltered locations. The construction is inexpensive, fully modular and light making it easy to transport and simple to install. It also can be used in shallow waters as well as in tidal locations where the sea bed dries out. The elements are connected by steel hinges and moored by chain or piles.



TECHNICAL DATA

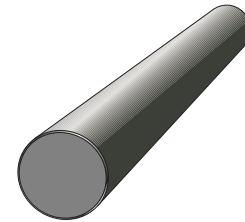
Plastic tube floats: Polyethylene (PEH)

Timber: Pressure impregnated, graded pine

Deck: Planed and grooved, 28x120 mm

Standard features: Fully prefabricated and hinged system

Optional accessories: Cable tray, timber fenders



Plastic tube

Dimensions: 6000 x ø400 mm

Weight: 60 kg

Net capacity: 690 kg

STANDARD PONTOON ELEMENTS	T2406	T2406H	T2412	T2412H
Length (m)	6,2	6,2	12,4	12,4
Width (m)	2,4	2,4	2,4	2,4
Plastic tube (no.)	2	4	4	8
Weight (kg)	590	710	1180	1420
Total capacity (kN/m ²)	0,9	1,8	0,9	1,8
Net capacity (kN/m ²)	0,5	1,4	0,5	1,4
Freeboard (m)	0,45	0,50	0,45	0,50

In addition to the above mentioned sizes, elements of special dimensions are also available.

Exact unit weight and freeboard are subject to timber water content and pontoon equipment.

Marinetek operates a policy of continuous development and reserves the right to change specifications without notice.

Revision date: 14.11.2008

MARINETEK GROUP

Vattuniemenkatu 3
FI-00210 Helsinki, Finland
WEB www.marinetek.net

TEL. +358 (0)9 682 4100
FAX +358 (0)9 682 41030
EMAIL info@marinetek.net



MARINETEK
More than Surface